

Cirdan Digital Pathology LIS

The ideal solution for digitising your cellular pathology service.

Transforming laboratories today to be ready for tomorrow's pathologists.

A flexible digital pathology and AI enabled LIS

Overview

Cirdan's Digital Pathology LIS (Cirdan DP) incorporates digital pathology and artificial intelligence, helping labs to realise diagnostic and workflow optimisations. The solution supports a wide range of leading scanning vendors.

Reduce the complexity of implementation



Whilst there are many digital pathology solutions on the market, they are often poorly integrated with a LIS, requiring multiple vendors and components to work together. Connecting these systems is often troublesome, resulting in a poor user experience for pathologists and lab technicians (Figure 1).

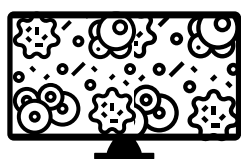
OPTIONS	THE REALITY
<p>Multi-vendor Solution</p> <pre>graph LR; A[Clinical LIS] <--> B[Cell Pathology LIS]; B <--> C[AI Algorithms]; C <--> D[DP Viewer]; D <--> E[Scanners];</pre>	<ul style="list-style-type: none">• Existing fragmented solutions• Multiple providers• Complex interoperability• Unmanageable interfaces• Hurdles to adoption• Scanner restricted
<p>CIRDAN DP LIS</p> <pre>graph LR; A[Clinical LIS] <--> B[Cirdan DP]; B <--> C[Scanners];</pre>	<ul style="list-style-type: none">• Fewer providers• Full E2E integration• Can interoperate with wider LIS ecosystem and other sub-specialty modules• Scanner agnostic• Better experience and embedded workflows• Seamless integration of diagnostic workflow

Figure 1: Illustration of how Cirdan DP reduces the complexity of a digital pathology implementation

Seamless Digital Pathology

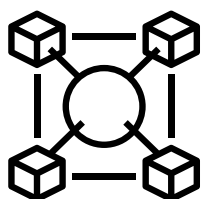
Building on Cirdan's extensive work in Digital Pathology (DP) we have developed a fully integrated DP enabled LIS that doesn't rely on third party solutions. Users can access Whole Slide Images (WSI) and other data from anywhere, saving time and allowing labs to share data and collaborate more effectively.

Key Features



Advanced Workflows

- Powerful image annotation features using an emerging standard.
- Efficient synoptic reporting aligned with national guidelines.
- Automated regulatory reporting which includes reporting to national cancer registries.
- Facilitates remote working and collaboration.



Supports Easy Integration and is Highly Interoperable

- Cirdan DP supports a range of healthcare middleware solutions.
- Seamless integration with cellular pathology workflows, e.g. for grossing and/or ordering new blocks, slides, or stains.
- Fully integrated into Cirdan's marketplace of AI apps. Designed to support the integration of 3rd party AI applications with ease.
- Supports all leading WSI vendors and file formats.



Security

- Highly secure and confidential patient data with full concordance with data protection principles.
- Customised control of access.
- Data protection confidence guaranteed.



Support

- 24x7x365 clinical and IT support.
- Further extensive training options available.
- Access to Cirdan's e-learning portal.
- Regular updates with feature enhancements.
- Industry leading reliability.

About Cirdan

Cirdan was founded with the aim of developing medical devices to accelerate and enhance the diagnosis of patients. Cirdan has linked itself closely with leading global collaborators with the purpose of staying ahead of the rapidly changing technological, workflow and data requirements that are challenging modern laboratories. The company operates globally, with its headquarters in Lisburn (UK & Ireland) and further offices in Canada and Australia. This distribution allows Cirdan to offer 24/7/365 clinical and technical support to clients around the world.



UK & Ireland Office

Riverbank, The Green,
Tullynacross Rd,
Lisburn, BT27 5SR.
U.K.
Tel: +44 289266 0880

Australian Office

714 Sturt Street,
Ballarat Vic, 3350
Australia
Tel: +61 419 039 702

Canadian Office

60 Renfrew Drive, Suite 250,
Markham,
Ontario L3R 0E1,
Canada
Tel: +1 416 479 0158



www.cirdan.com marketing@cirdan.com

