



NHS Facilities

Management Conference

Thursday 9th November | 15Hatfields, London

Agenda for today:





Welcome to NHS Facilities Management Conference!



9th November 2023
8am – 4pm
15Hatfields, London



Slido

Please scan the QR Code on the screen. This will take you through to Slido, where you can interact with us.





Chairs Opening Address



Emma Brookes

Estates and Facilities (EFM) Head of Soft
FM Strategy & Operations - NHS England



Speaking Now...



Emma Brookes

Estates and Facilities (EFM) Head of Soft FM Strategy & Operations - NHS England



Speaking Now...



Alex Pitman

Green Project director - Alder Hey

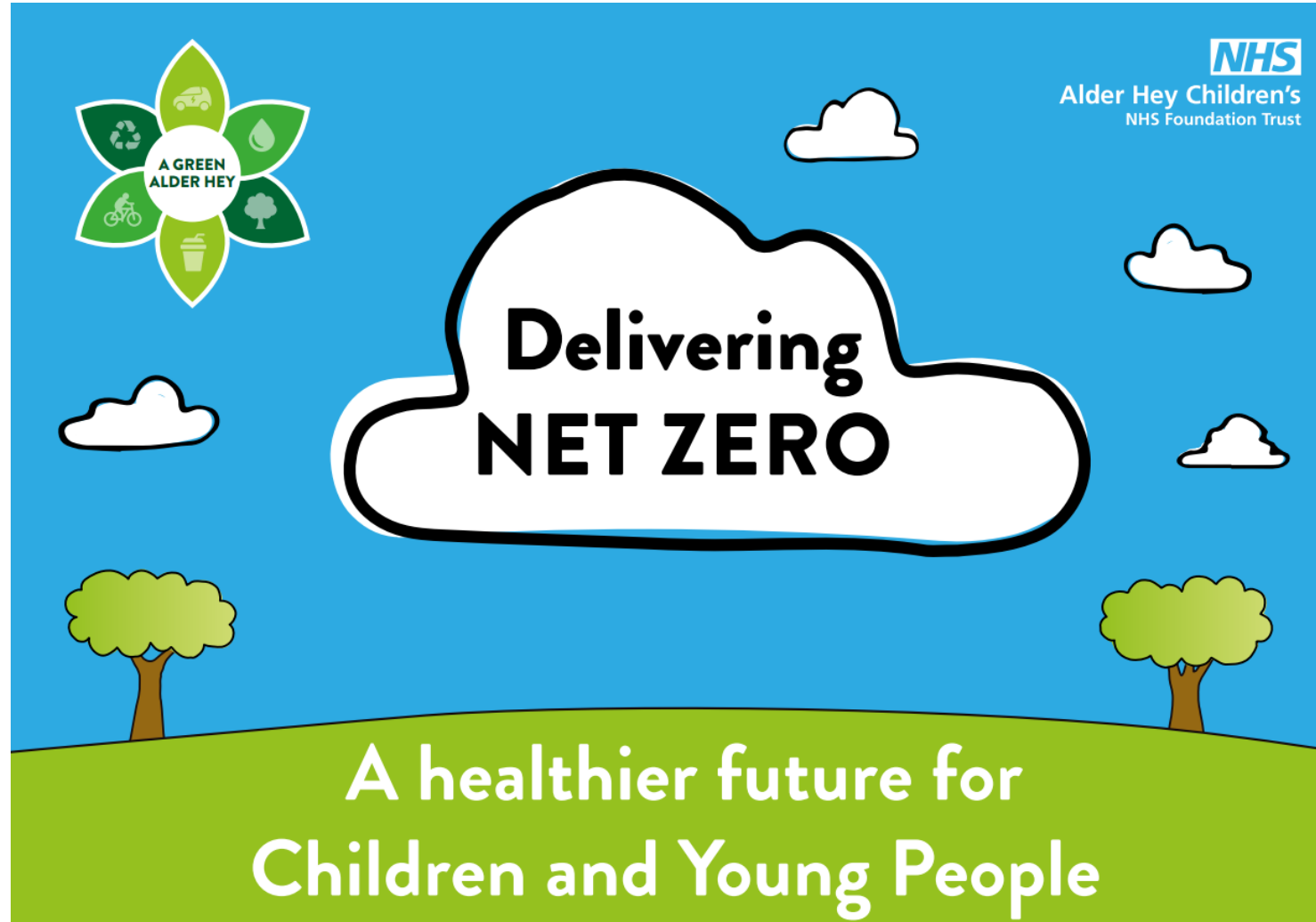





Alder Hey's Green Plan

From boilers, bins and bikes to better homes.

Alex Pitman
Green Project Director

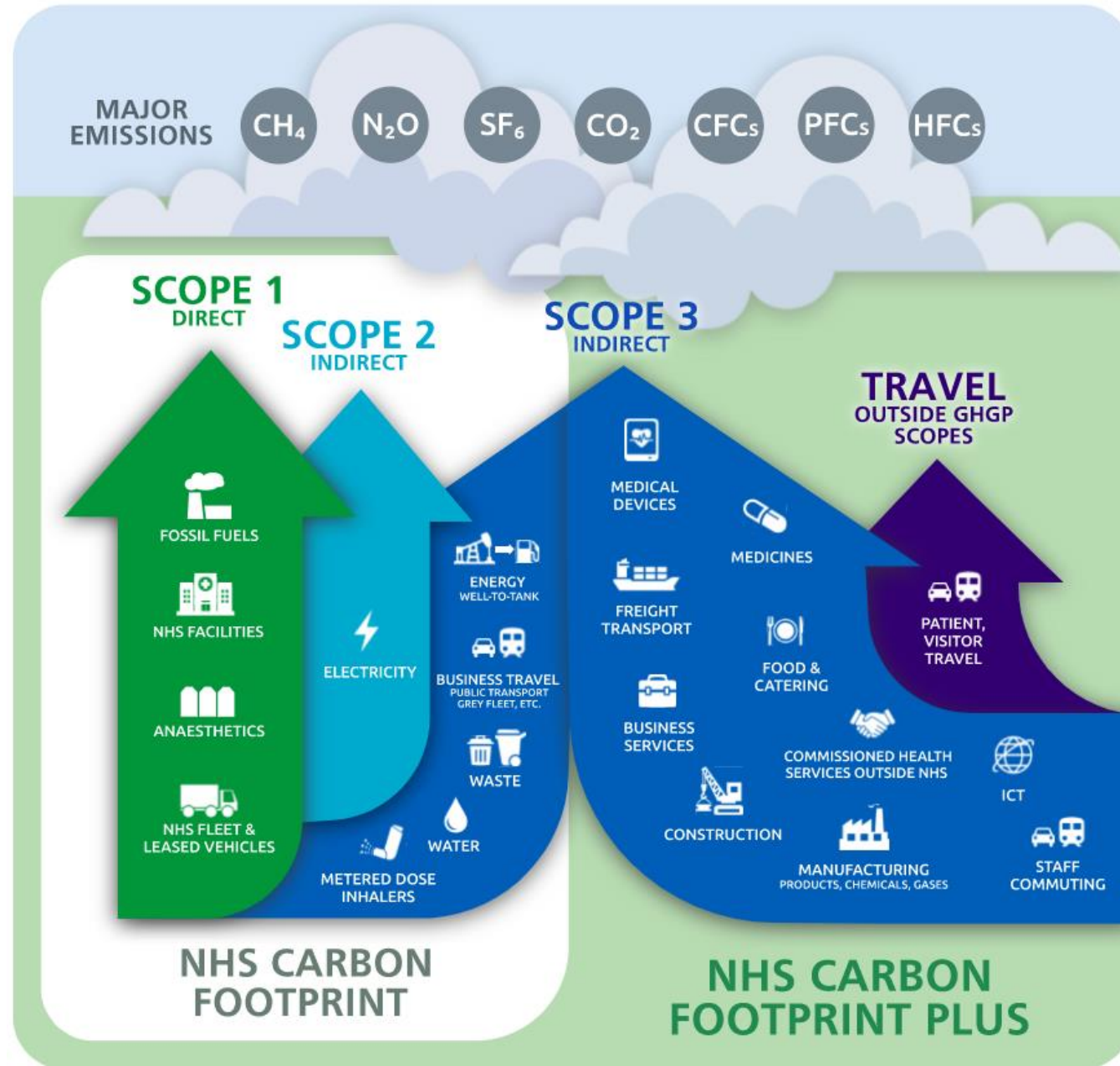



Alder Hey Children's
NHS Foundation Trust

**Delivering
NET ZERO**

**A healthier future for
Children and Young People**







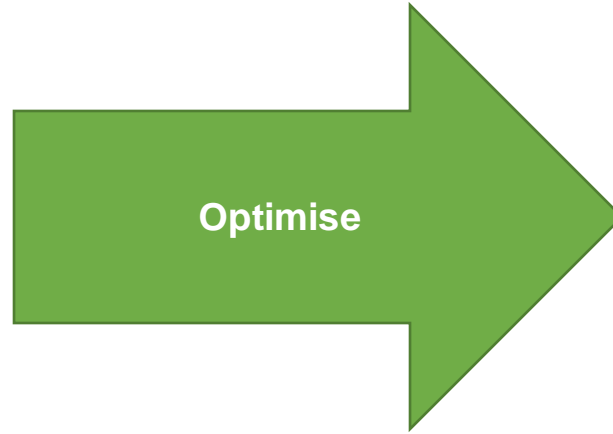
Optimise

- **Deliver £ and CO2e**
- **Build momentum**



Transform

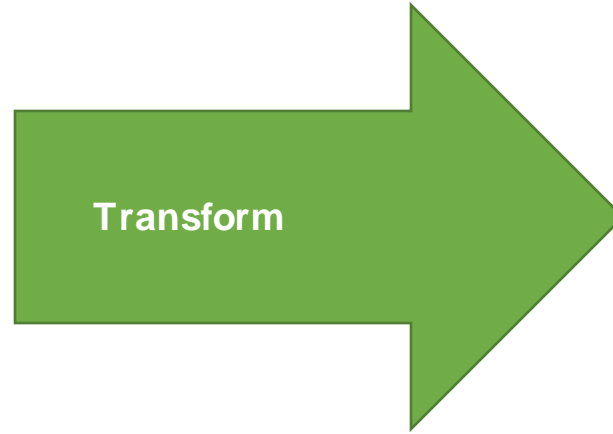
- **Invest**
- **Widen**



- **Buildings**
 - CHP
 - GSHP
 - Temperatures
 - Heat recovery
 - F-gas
 - Doors
 - Medical gas

- **Waste**
 - Compactors
 - Bins
 - Waste reduction

- **Transport**
 - Dr Bike
 - Signage



- **Buildings**
 - Heat decarb.
 - PV
 - LED

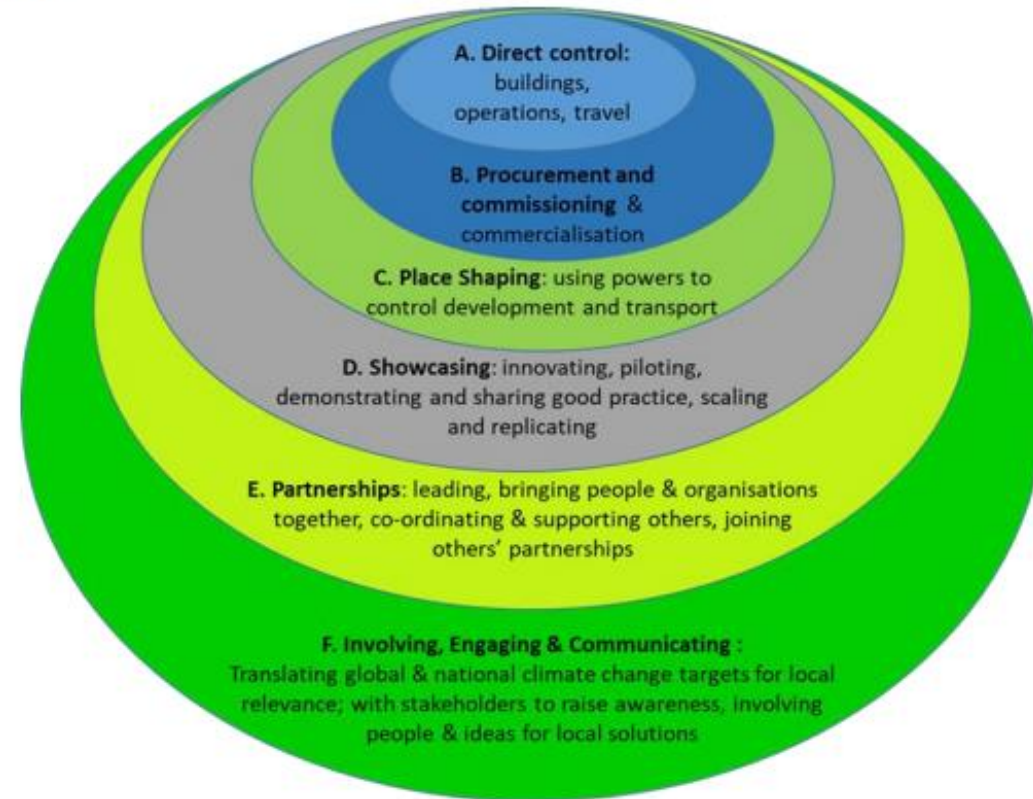
- **Waste**
 - Waste designed out

- **Transport**
 - Bus lane

- **17% cut in scope 1&2 in first year**
 - **No capex.**
 - **£££ saving**

- Net zero Alder Hey is not enough
- System wide change

Figure 1.2 How local authorities control and influence emissions



Source: Coxcoon, R. & Roberts, S. (2020) *Climate Action Planning Tool for Local Authorities*, Centre for Sustainable Energy. <https://www.cse.org.uk/news/view/2541>

HSJ AWARDS 2023 In Partnership with: 



HTM 07-02: EnCode
- making energy work
in healthcare



UK Net Zero Carbon
Buildings Standard

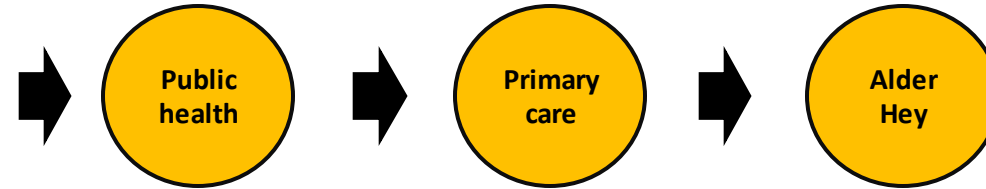
 Arriva North West @arrivanorthwest · Jun 15
Safe to say all the student doctors on site today at @AlderHey's Clean Air Day absolutely loved the new hydrogen bus!

- Air conditioning ✓
- Charger ports ✓
- Wi-Fi ✓
- Panoramic windows ✓
- and more! ✓

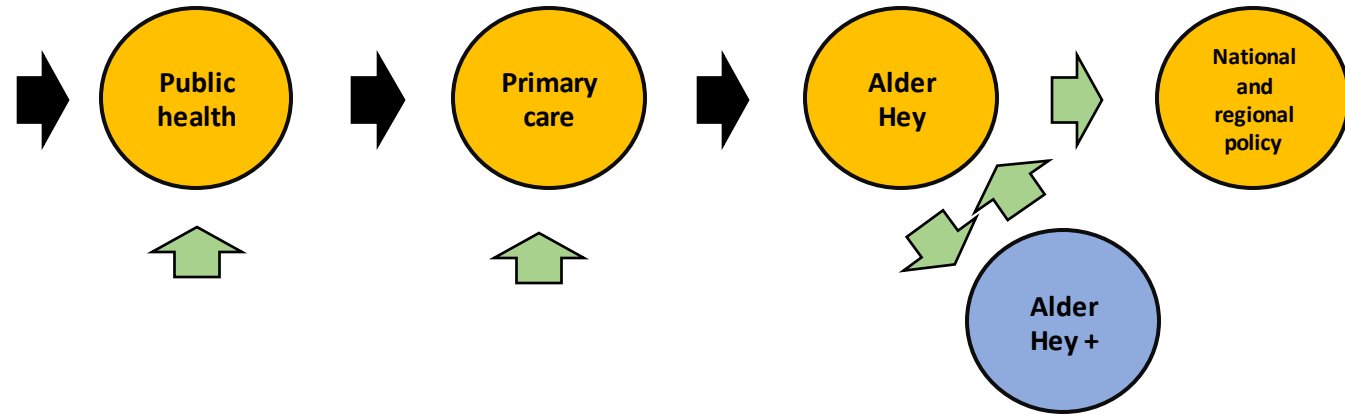
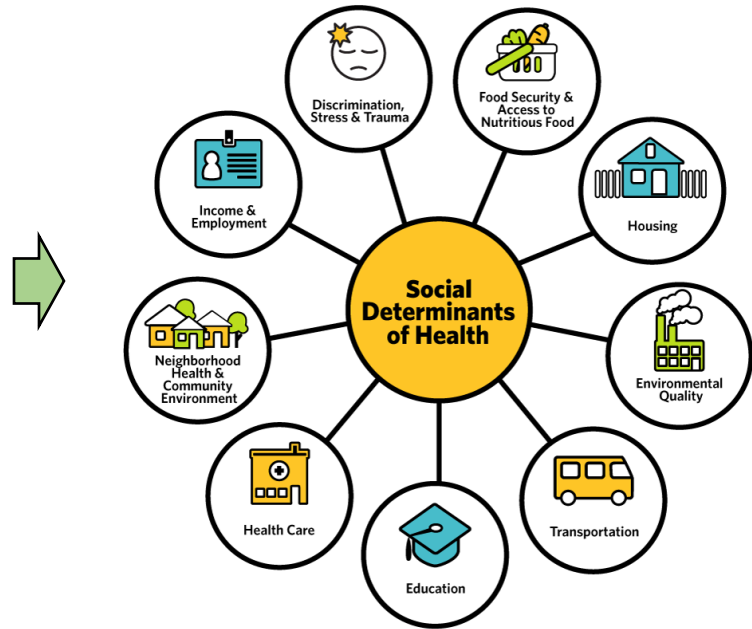
Spot them out on the road soon operating out of our St Helen's depot. 🚌
🌱



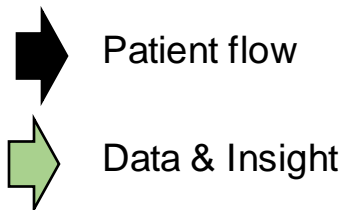
Mercetraup and 3 others



➔ Patient flow



- Need to decarbonise system not just pieces of it
- Teeth and houses?



- **Speed up**
 - **17% is not fast enough**
- **Smarter ways of working**
 - **Innovation**
 - **Standardisation**
- **CHP phase out**
 - **>£1 billion challenge**
 - **Technology?**
 - **Finance?**





Speaking Now...



Mr Paul Chandler

Deputy Director – Net Zero Travel and
Transport - NHS England





England

Net Zero Travel & Transport Strategy

Summary for Facilities Management Conference

9th November 2023

Paul Chandler, Deputy Director for Transport

The National NZTT Strategy for the NHS



- Outlines a high-level path to reach the commitments within *Delivering a Net Zero National Health Service* for travel and transport emissions (net zero greenhouse gas emissions by 2045).
- The Strategy covers the NHS Fleet, Business Travel, Staff Commuting and NEPTS services in detail.
- It does not cover patient and visitor travel or freight and logistics, mainly owing to a lack of data.
- The strategy can be considered to have three main parts:
 - A summary strategy highlighting key interventions and roadmap (**WHAT & WHEN**)
 - A Technical Annex describing the data, methodology, assumptions and conclusions in detail (**WHY**)
 - An Implementation Toolkit, available on our NZTT FutureNHS workspace (**HOW**)

Net Zero Travel & Transport Roadmap

NHS Net Zero Commitment

2024

New national specifications for **zero emission ambulances** will be published.



2026

- Sustainable travel strategies will be developed and incorporated into NHS organisations' Green Plans.
- All vehicles offered through NHS vehicle salary sacrifice schemes will be **electric**.



2033

Increased uptake of active travel, public and shared transport and zero emission vehicles will **reduce staff commuting emissions by 50%**.



2030

All new ambulances will be **zero emission**.



2027

All new vehicles owned or leased by the NHS will be **zero emission** (excluding ambulances).



2035

- All vehicles owned or leased by the NHS will be **zero emission** (excluding ambulances).
- All non-emergency patient transport will be undertaken in **zero emission vehicles**.

2036

Over 50% of the ambulance fleet will be **zero emission**.

2040

- The full fleet will be **decarbonised**.*
- All owned, leased, and commissioned vehicles will be **zero emission**.
- All business travel will be **zero emission**.

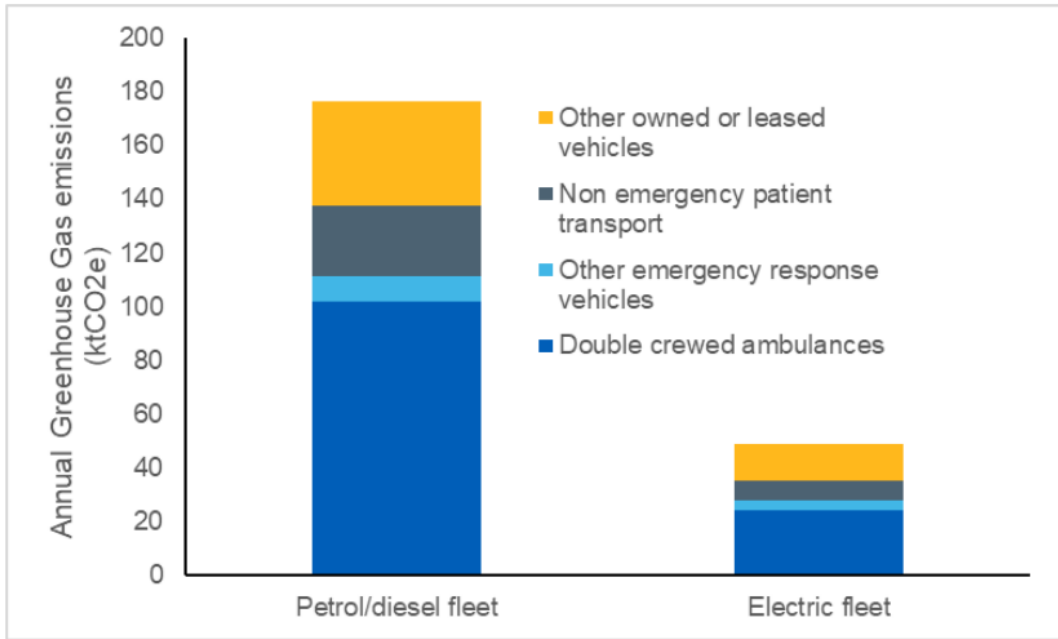
2045

NHS Net Zero Carbon Footprint Target

NHS Net Zero Carbon Footprint Plus Target

*subject to complete decarbonisation of the electricity grid, in line with government policy

Quantified Benefits of the NZTT Strategy



	Annual health benefits (£m)	Annual societal benefits (£m)	Annual direct NHS savings (£m)
NHS fleet and business travel	2.1	77.6	59.0
Modal shift	38.3	112.7	0.0
Electrification of personal vehicles	1.3	45.2	0.0
Total	£41.7m	£235.5m	£59.0m

- Annual carbon emissions reduced by 70% (on current national grid).
- As the grid decarbonises, emissions reductions will increase.
- UK Government have stated aim of a 100% renewable national grid by 2035.

- A fully electrified NHS fleet will require one-off c.£100m direct investment in NHS EV charging infrastructure.
- This would yield up to £59m per annum in fuel and maintenance savings (HMT Green Book prices)
- If the strategy was delivered in full, it could also generate over £270m per annum in monetised societal benefits (e.g. improved population health, fewer road accidents, etc.) – according to DfT and DEFRA data models.

Interventions and policies



All

Effective planning

- Develop a sustainable travel strategy to be incorporated into future Green Plans by 2026

Sustainable procurement

- Integrate zero emissions vehicles into procurement practices and align with roadmap milestones (e.g., salary sacrifice to only offer EVs by 2026)



ICS/ICB

Strategic partnerships

- Form partnerships with local authorities and local transport authorities to maximise funding and infrastructure opportunities

Future system design

- Co-ordinate funding and deployment of refuelling infrastructure for emergency fleets



Ambulance trusts

Piloting and evaluation

- Pilot and evaluate zero emissions ambulances and other ERVs

Plan operational changes

- Charging infrastructure
- Dispatch
- Standby points
- Maintenance
- Staff rotas
- Training
- Etc.



Secondary, Community and Primary

Cross-cutting

- Sustainable travel inductions
- Route planning tools

Transition in business travel

- EV car and e-bike pools
- Incentivising low carbon business travel reimbursement

Sustainable travel

- Improve facilities and routes
- Create staff rewards for sustainable travel
- Explore ways to subsidise public transport
- Provide shuttle buses or free transport between sites

Further support and resources from NZTT Team



- Several elements of a NZTT Implementation Toolkit are already available on our FutureNHS workspace: <https://future.nhs.uk/connect.ti/sustainabilitynetwork>.
- By summer 2024, NHS England will release guidance to trusts and ICBs on how to construct a sustainable travel plan – including minimum requirements and examples of best practice.
- The Zero Emission Fleet Transition Tool is now live at <https://zeft.cenex.co.uk/>. It helps NHS organisations and individuals assess the suitability and total cost of ownership of EVs versus ICE equivalents.
- We are developing the Emergency Vehicle Recharging Infrastructure Tool (EVRIT) to help calculate what ambulance charging capacity is needed at specific ambulance stations and hospital sites.
- We will be running NHS England's first ever NEPTS fleet and patient transport surveys in 2024 to start building a dataset in these areas.
- We will continue to develop additional detailed case studies of successful interventions from our Modal Shift and ambulance networks in particular.
- Please send requests for new tools, guidance, frameworks to england.nztt@nhs.net. We will try to offer bespoke advice and support, where possible.



Up Next...





Slido

Please scan the QR Code on the screen. This will take you through to Slido, where you can interact with us.





Q&A Panel



Slido

Please scan the QR Code on the screen. This will take you through to Slido, where you can interact with us.





Morning Break



Chairs Morning Reflection



Emma Brookes

Estates and Facilities (EFM) Head of Soft
FM Strategy & Operations - NHS England



Speaking Now...



Dr Melanie Robinson
Associate - BIM Academy





Up Next...

SFG20
The industry standard for building maintenance



Speaking Now...



Victoria Fleming
Chief Revenue Officer - SFG20

SFG20



What does being compliant
with SFG20 really mean?

And why is it important?



Introduction



Victoria Fleming
Chief Revenue Officer

What we'll cover today...

- Who and what is SFG20?
- Why do we need a standard?
- Myth busting
- How to work with SFG20

Who are SFG20?



amazon



David Lloyd
CLUBS



Durham
University



NHS
Blood and Transplant

- ★ SFG20 are part of The Building Engineering Services Association
- ★ Referenced as the standard to maintain to in industry guides and tenders
- ★ A business with customers, large and small, in many countries around the world, inc. healthcare, education, government, sports and leisure and property
- ★ Industry thought leaders, committed to safe and efficient maintenance practices
- ★ Dedicated teams of technical authors, software developers, learning & development, customer success

In a nutshell...what is SFG20?



- Launched 1990, in response to an industry-wide issue - maintenance wasn't being performed in a uniform way
- Varying levels of quality and safety
- There was a need for a standard that could be adopted nationally



- The library of schedules is diverse - more than 2000 schedules
- Covering 70+ equipment types



- Specialist equipment e.g., healthcare (aligned with government technical guidance)



- Colour-coded tasks differentiate between legally required tasks versus those that will keep assets running for longer and more efficiently



- Range of software solutions available that allow users to MAP assets, CREATE maintenance regimes, COST plans and INTEGRATE with CAFM systems



- Used in 18 countries: Middle East, Europe, Asia, USA, Australasia & South America

Cloud based maintenance schedules that update in line with legislation

Which tasks help prolong asset life

5

Fire door obstructions

Criticality: Amber

Frequency: 1M

Skill Set: Facilities Manager

Action: 1 Check on either
2 Remove

How often

By whom

Notes: This check may be completed by fire wardens (marshals) if suitably instructed.

Which tasks are statutory

6

Self-closing devices in residential buildings

Criticality: Red

Frequency: 3M

Skill Set: Facilities Manager

Action: For residential buildings containing separate dwellings, check:

- 1 The closing device is correctly attached to the door leaf and frame.
- 2 There is no leaking oil.
- 3 There is no damage to the door leaf or frame.
- 4 The door is self-closing.
- 5 If it is a double leaf door, ensure that the closing device is fitted to both leaves.
- 6 Ensure that rebated double leaf door sets are fitted with a suitable co-ordination device which functions correctly and enables the leaves to close in the correct sequence.
- 7 Where necessary, ensure that the door's opening force is in compliance with current accessibility regulations.

What maintenance needs to be done

Notes:

A broad range of content and software

Industry standard for building maintenance specification

CONTENT

Cloud-based maintenance schedules relating to a wide range of assets

SOFTWARE

A range of tools that allow you to build and cost maintenance plans according to your needs

Self-closing devices in residential buildings

Criticality: Red

Frequency: 3M

Skill Set: Facilities Manager

Action: For residential buildings containing separate dwellings, check:

- 1 The closing device is correctly attached to the door leaf and frame.
- 2 There is no leaking oil.
- 3 There is no obvious damage to the pivot arm and terminal fixings.
- 4 The door closes fully into the frame.
- 5 If it is a double-leaf, double-acting door, check that it closes in the fully aligned position.
- 6 Ensure that rebated double-leaf door sets are fitted with a suitable co-ordination device which functions correctly and enables the leaves to close in the correct sequence.
- 7 Where necessary, ensure that the door's opening force is in compliance with current accessibility regulations.



MAP



CREATE



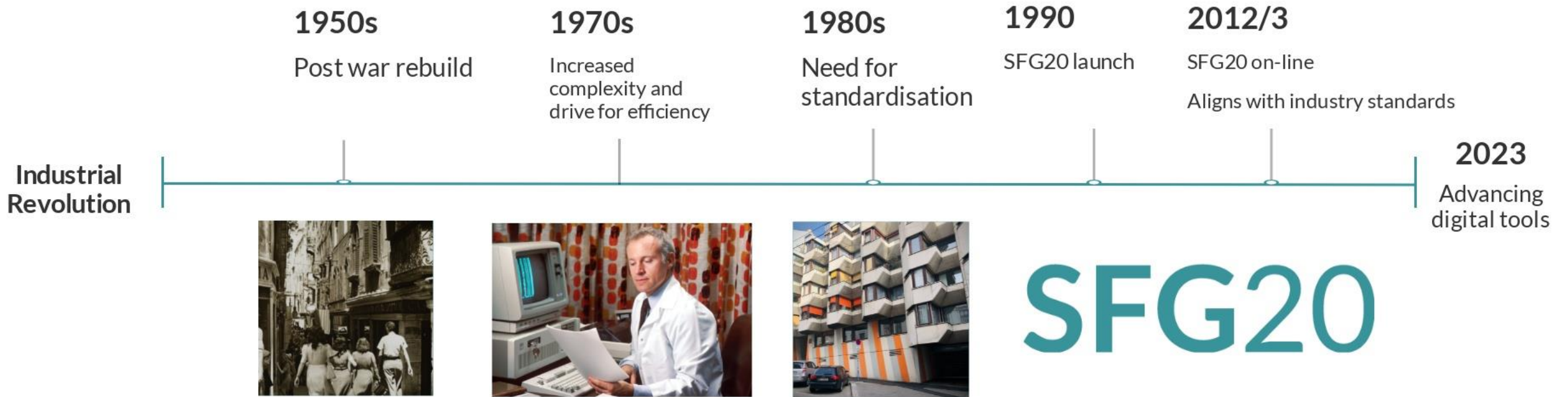
COST



SHARE

6

The evolution of FM and the origins of SFG20



Why do we need a standard?



Consistency and Quality



Transparency



Safety



Legal and Regulatory Compliance



Efficiency



Adaptability



Longevity



Cost savings

Why do clients specify that tenders should be in line with SFG20 specification?



EASY
COMPARISON



SAFETY &
COMPLIANCE

As a contractor - why is it important to use SFG20?



QUALITY



SAFETY

SFG20 has become industry speak for best practice - without really knowing what it is or how to use it



Tick here to confirm you are compliant with SFG20

"I never knew what that box meant - I always tick it. I just thought it was good practice."

SFG20 membership list will help to drive facilities excellence

- **Enhanced Transparency:** The online list provides stakeholders, clients, and the general public with a transparent view into which companies are actively licensed
- **Easy Accessibility:** Located on the SFG20 website, users can quickly and easily access the information anytime, anywhere, ensuring they have up-to-date information on licensed companies
- **Streamlined Verification:** For those seeking to collaborate or do business with licensed companies, this solution simplifies the verification process, saving time and ensuring legitimacy

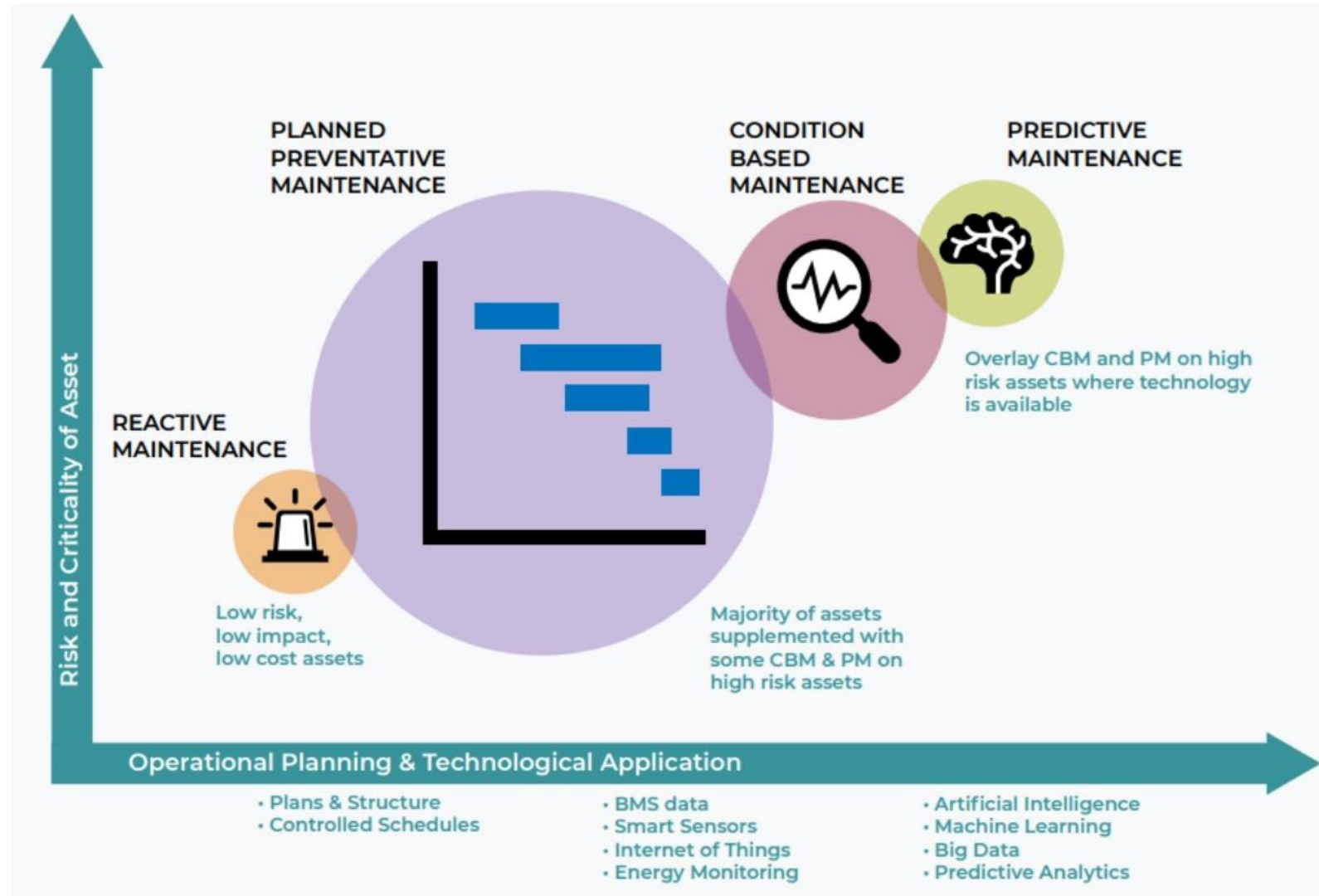
Let's bust some myths!



It's not OK to share SFG20 licenses

- **Data Security and Integrity:** Sharing a license increases risk of unintentional changes, deletions, or mistakes = compromises reliability and accuracy of the data being used.
- **Audit Trail:** If multiple users share a single license, tracking individual actions e.g., who accessed what information and when = challenging
- **Licensing Terms and Conditions:** T&Cs of the SFG20 license specify how the product can be used.

SFG20 is not just PPM!



Source: <https://www.sfg20.co.uk/news/sfg20-reveals-new-whitepaper>



**So, how should
SFG20 be used?**

Ensure proper and competent use - attend a Super-User Training Course



"Lesley's training session was excellent; she took us through all the aspects of SFG20 and explained everything in a common sense way"

SFG20 Training attendee

- 3 x 2 hour online sessions. Held each month.
- Provides the tools to become a competent user and get the most out of the system



Ensure maintenance plans are updated using our technical bulletins

- Technical bulletins alert license holders to new news
 - Upcoming changes in regulations, standards or best practice
 - New SFG20 schedules
 - Updates to SFG20 schedules
 - Software updates
- Update your maintenance plans
 - Include the latest versions of schedules
 - Align with your (up to date!) asset list
 - Customise schedules: overlay your expertise with SFG20 guidance to really optimise your maintenance
 - Add notes that will help engineers



Align latest SFG20 guidance with your CAFM

- Often content is exported from SFG20 and imported into a CAFM at the start of a contract
- Thereafter, further updates do not always flow through to third party software
- Easy to fall off the standard quickly

Create an auditable trail

- Evidence of completion of mandatory & statutory tasks
- In line with prescribed frequencies
- Carried out by a competent person
- Recorded in a central point, consistently



Your SFG20 compliance checklist



Access the latest cloud-based schedules



Competence (via training course attendance)



No license sharing!



Keep your plan updated



(Proof of) current SFG20 license



Sync latest content with CAFM/3rd party software



Confirm schedule version with contractors



Evidence of completion of mandatory & statutory tasks in line with prescribed frequencies

You'll find lots of valuable content on our website!

Download our range of e-guides



Q&A

"Let's hear
from you!"



Slido

Please scan the QR Code on the screen. This will take you through to Slido, where you can interact with us.





Speaking Now...



Jonathan Waggott

Managing Director - Angel Guard Ltd /
Water Management Society



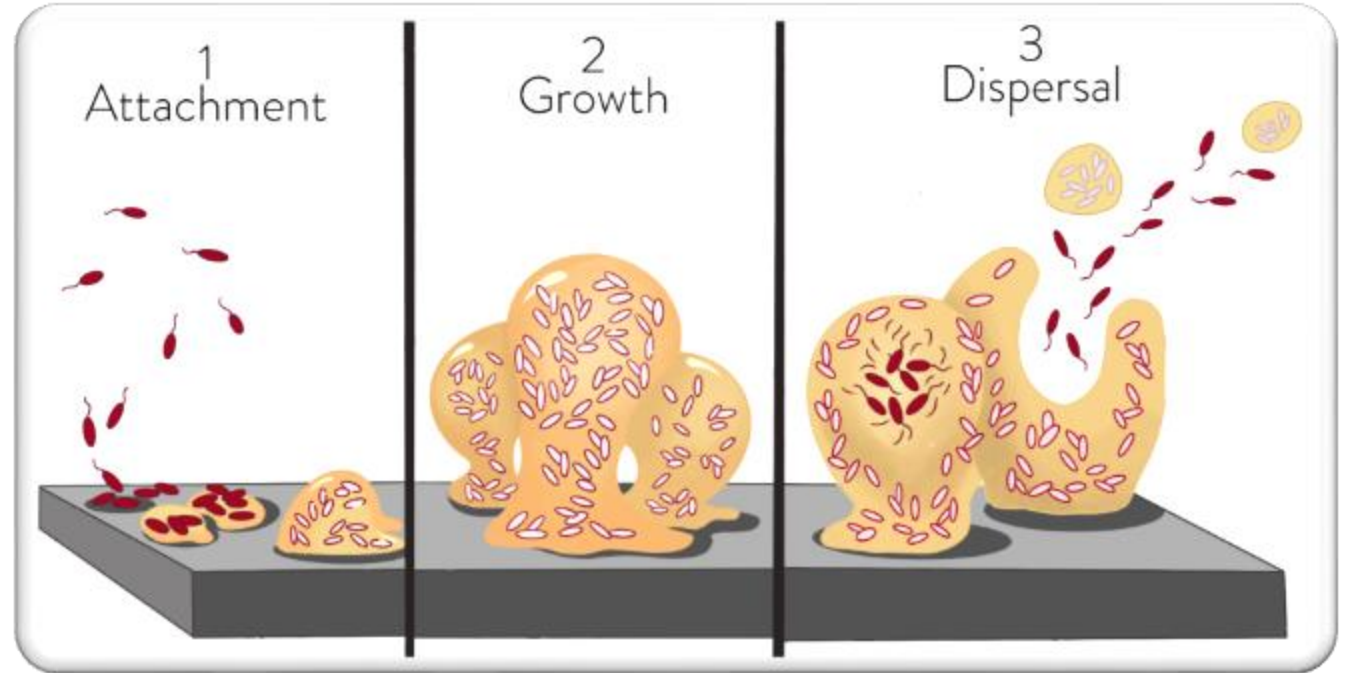
ANGEL GUARD
MONITOR • CLEAN • PROTECT • TRUST

Remote Monitoring of Water Quality

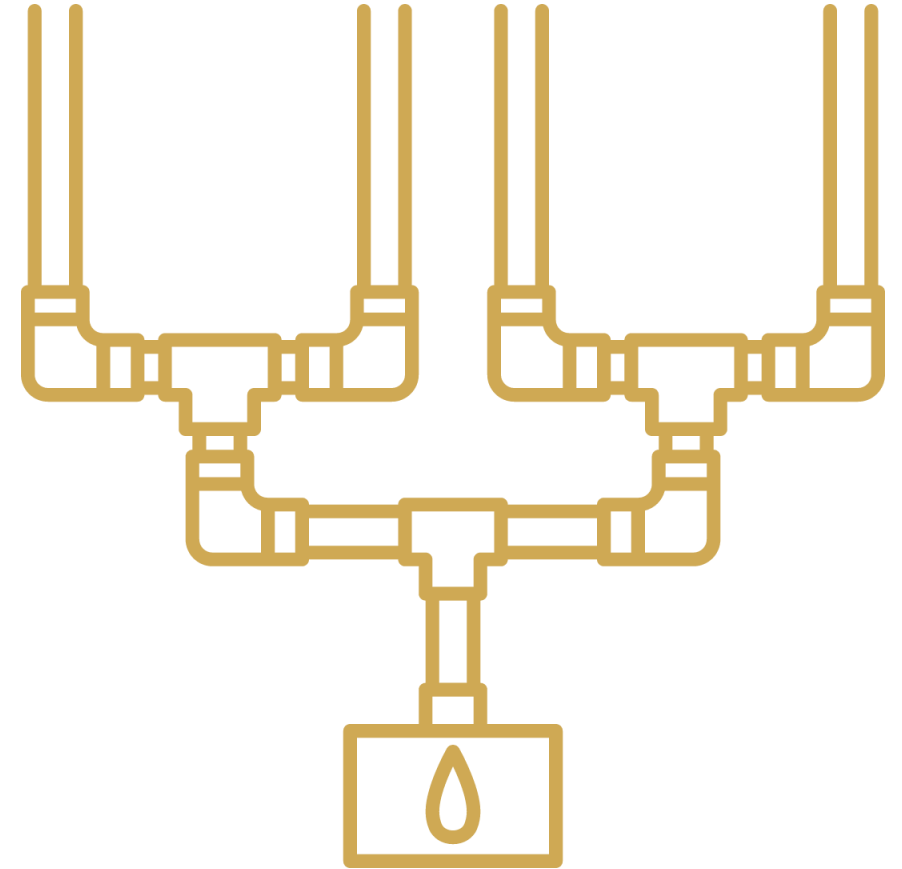
Jonathan Waggott Managing Director
jwaggott@angel-guard.co.uk; 00447527186928

THE PROBLEM

- Millions of people die each year across the world from infections caused by water-borne pathogens
- Pathogens can also attack pipework and create leaks
- This can cost billions of pounds
- Biofilm can quickly develop within hot and cold water systems, given the right conditions leading to millions of pathogens being delivered to hosts



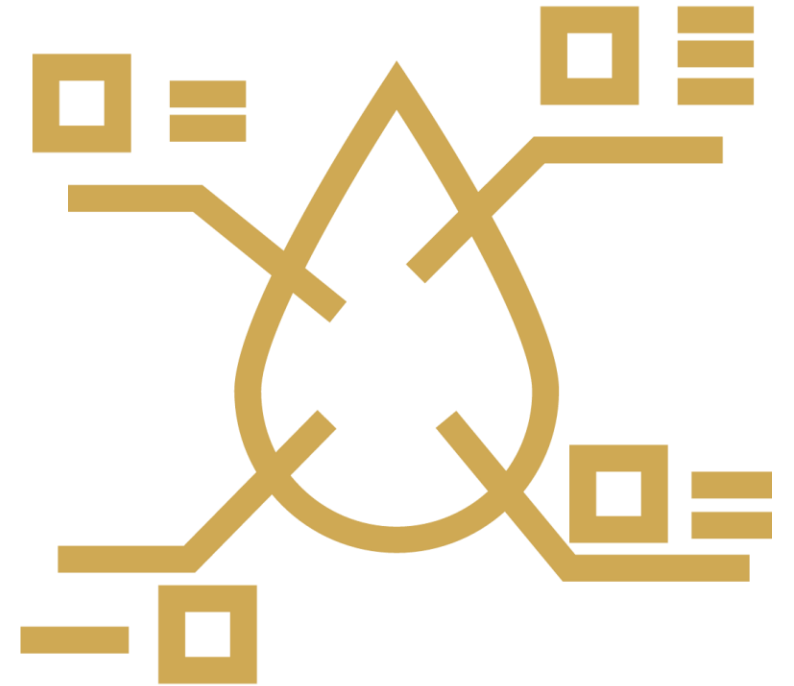
Factors that contribute to the safety of water systems



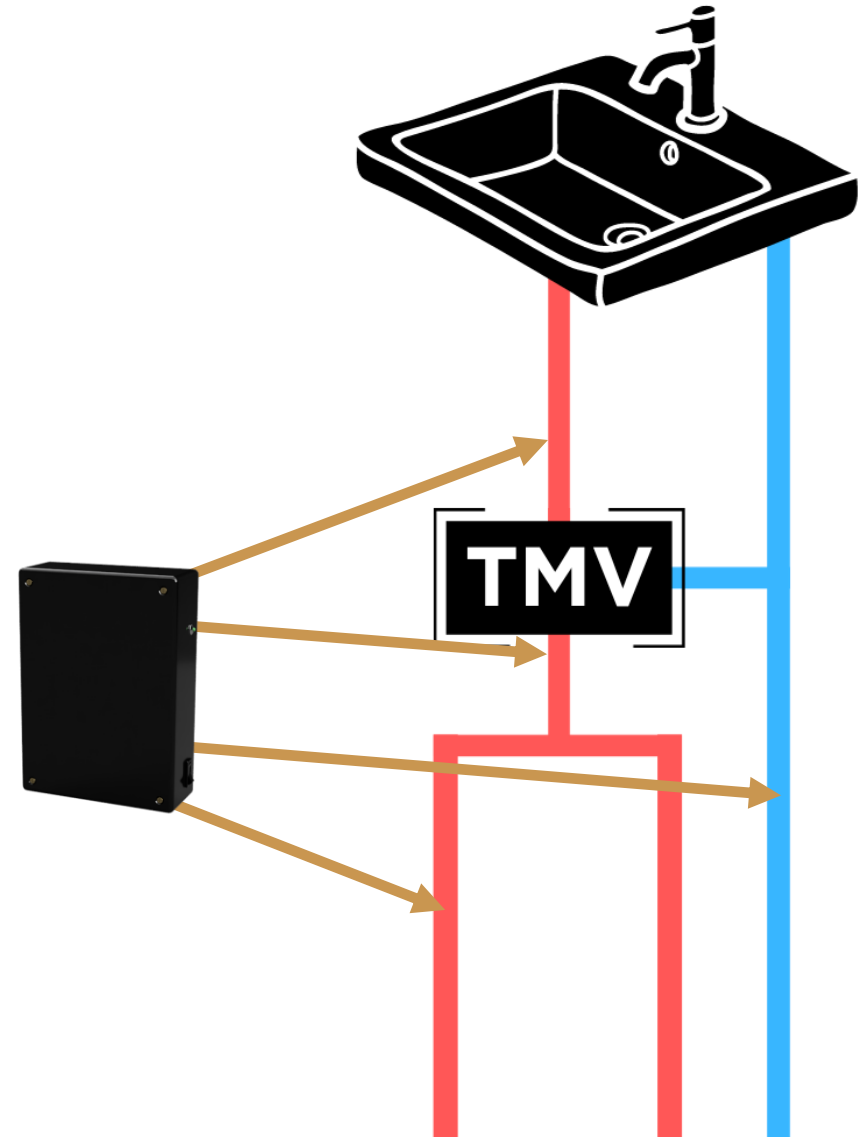
How is data currently collected & monitored?



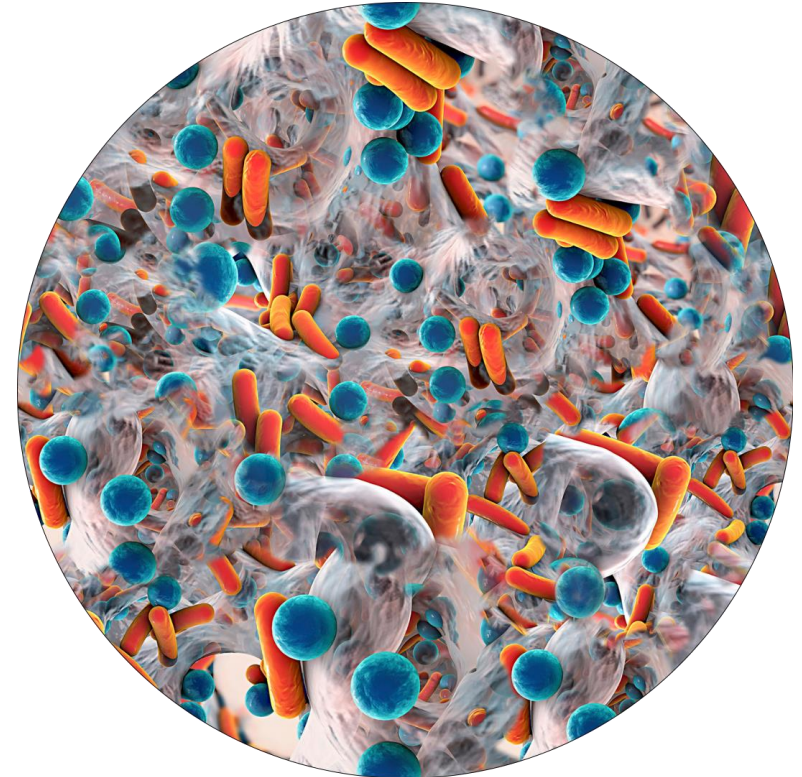
What Is Remote Water Monitoring?



How Does it Work?



Biofilm monitoring



What types of buildings?



Where Else can it be used?



Where should you measure?



The data challenge

The image displays three screenshots of the Angel Guard monitoring system interface, illustrating the data challenge in a security monitoring context.

Top Screenshot: Clearance Monitoring System
This view shows the overall system status for Angel Guard HQ. It features a 7-day device trend bar chart and a donut chart for current device status. The donut chart indicates that 45% of devices are High Risk, 35% are Moderate Risk, and 20% are Low Risk. The total number of devices is 7. Below the charts are filters for Risk Level and Filter by feed (Hot, Cold, Mixed, Return).

Date	High Risk	Moderate Risk	Low Risk
14-10-2023	1	1	1
15-10-2023	1	1	1
16-10-2023	1	1	1
17-10-2023	1	1	1
18-10-2023	1	1	1
19-10-2023	1	1	1
20-10-2023	1	1	1

Middle Screenshot: Location Groups
This view displays various location groups and their associated devices. Each group has a notification icon, a device count, and a risk level indicator.

Location Group	Notification	Device Count	Risk Level
Factory Demo Group	Notification	3	High
Bathroom Zone 1	Notification	3	High
Factory General Test	Notification	3	High
Subj Test	Notification	3	High
Office Group	Notification	3	High
Bathroom Test Group	Notification	3	High

Bottom Screenshot: Notifications
This view shows a list of notifications for the Clearance System. The notifications are categorized by priority (High Priority, Medium Priority) and include details such as device ID, event description, and an action button.

Priority	Device ID	Event Description	Action
High Priority	AL00000216	Pipe 6 has had no flow event in over 24 hours.	Action
High Priority	AL00000215	Pipe 4 has had no flow event in over 24 hours.	Action
High Priority	AL00000217	Pipe 8 on Device 01105202 has had no flow event in over 6 hours.	Action
High Priority	AL00000218	Pipe 8 on Device 01105202 has had no flow event in over 6 hours.	Action
High Priority	AL00000214	Status changed from Moderate Risk to High Risk.	Action
High Priority	AL00000247	Pipe 8 on Device 01105202 has had no flow event in over 6 hours.	Action
High Priority	AL00000246	Pipe 4 on Device 01105202 has had no flow event in over 6 hours.	Action

The benefits of Remote Monitoring



Cost vs benefit

Sustainability Benefits



With real-time monitoring, constant maintenance must be performed to ensure that the vehicle is always in good condition. This helps in reducing CO₂ emissions and fuel consumption. For example, a fleet of 100 vans making 100,000 journeys per year can save 3.12 tonnes of CO₂ per year.

Real-time water usage data can be used to identify high energy costs through inefficient water usage. For example, 100 outlets are used per year, which can save around 4.92M litres of water. This can be reduced by 50% through weekly flush testing for leaks. This can reduce this by 2.46M litres through careful targeting of testing. This can reduce water usage per year by 2.46M litres.



Will you be non-compliant if you
don't use remote monitoring?



Q&A Panel



Panel Discussion - Achieving Net Zero in the NHS Panel Discussion an FM perspective

This panel discussion will focus on the NHS's commitment to achieving net-zero carbon emissions by 2040. The panel will discuss the challenges and opportunities of this ambitious target, as well as the role that healthcare facilities can play in reducing carbon emissions.



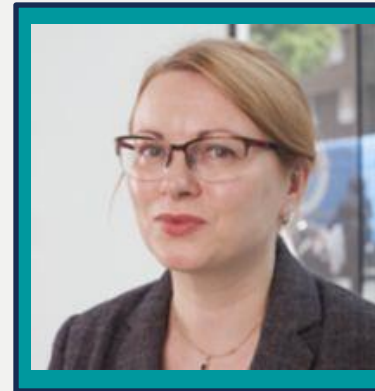
Slido

Please scan the QR Code on the screen. This will take you through to Slido, where you can interact with us.





Speaking Now...



Irene Paik-Semenov
Head of Asset
Management
QTS



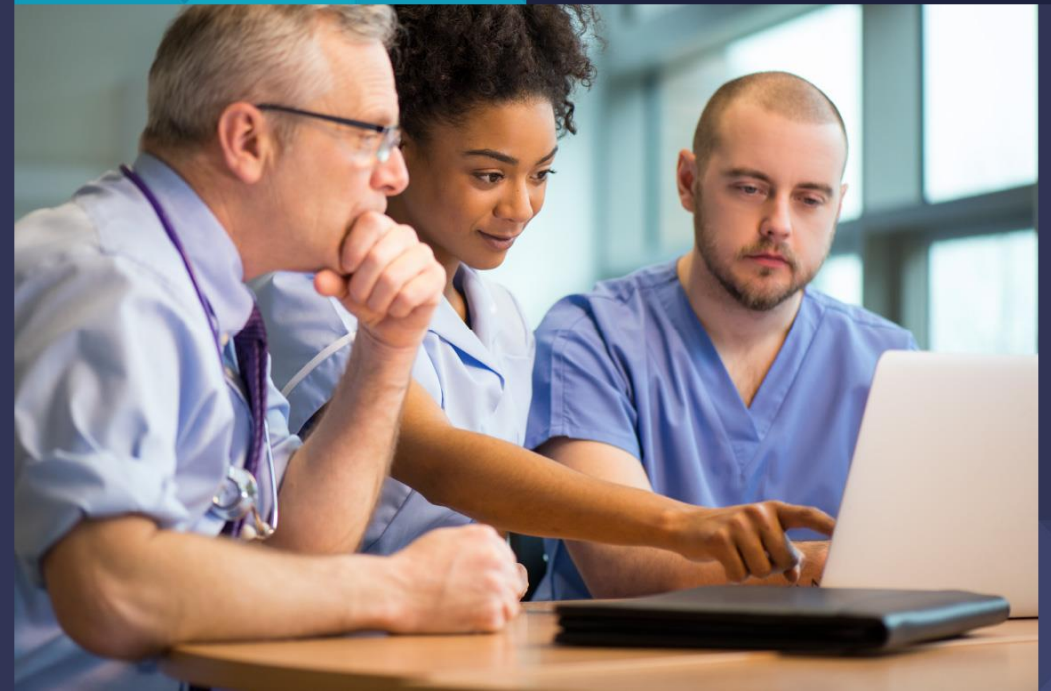
Dr Barry McCollum
Managing Director
EventMap



Chris White
Associate
Technical Director
EventMap



Why FM Digitisation is Essential for the NHS





The Wholly Owned Subsidiary of
Central and North West London NHS
Foundation Trust led by ex NHS E&F
professionals.

Experts in the delivery of Estates &
Facilities services within the NHS



Software experts experienced in
development and implementation
of innovative NHS Estates and
Facilities digital solutions

Integration with other systems

Limited data outputs

Data results are at a fixed point in time

What are the challenges with manual ERIC returns?

Difficulty with data and response accuracy

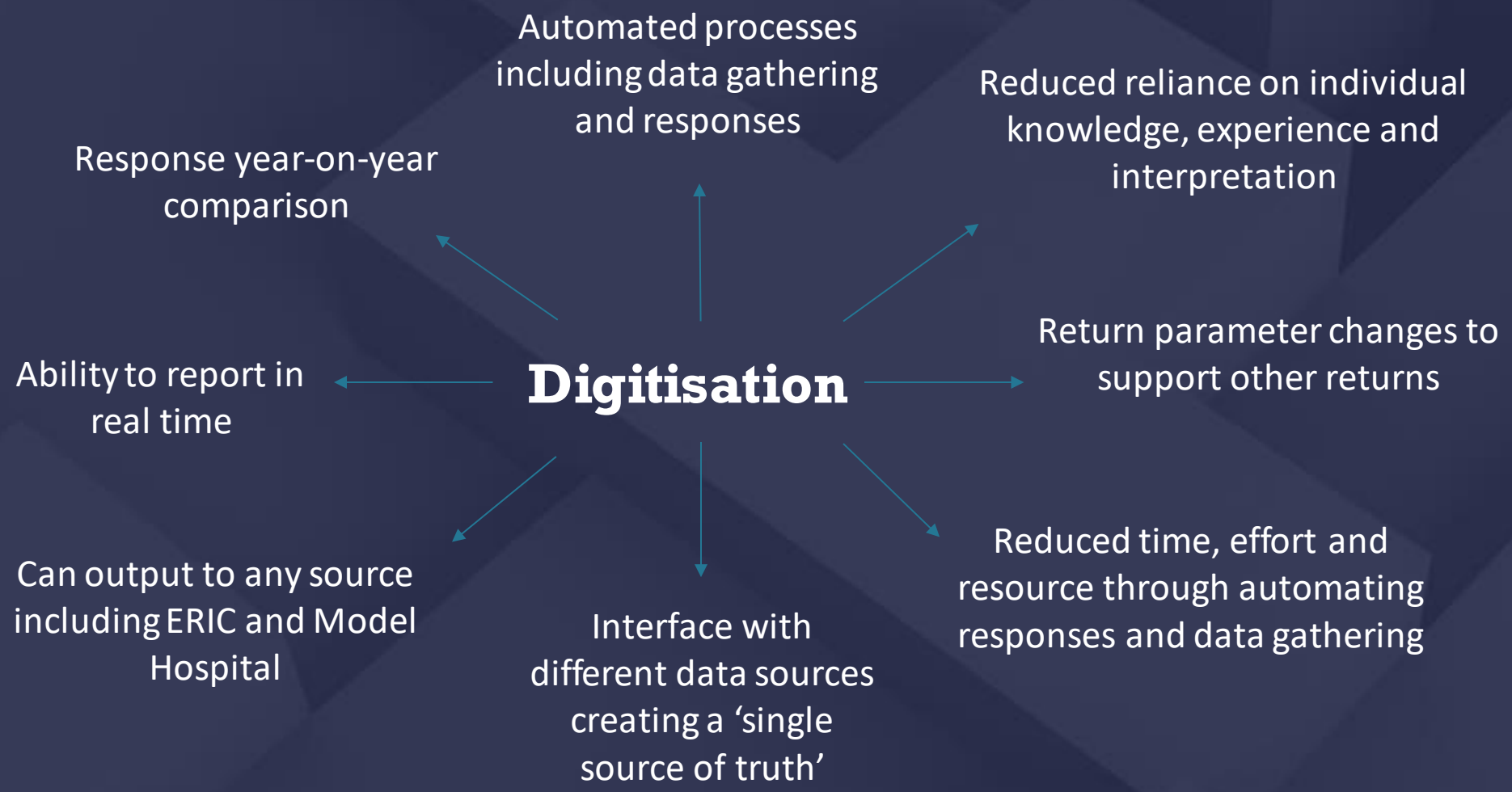
Requires specialist management

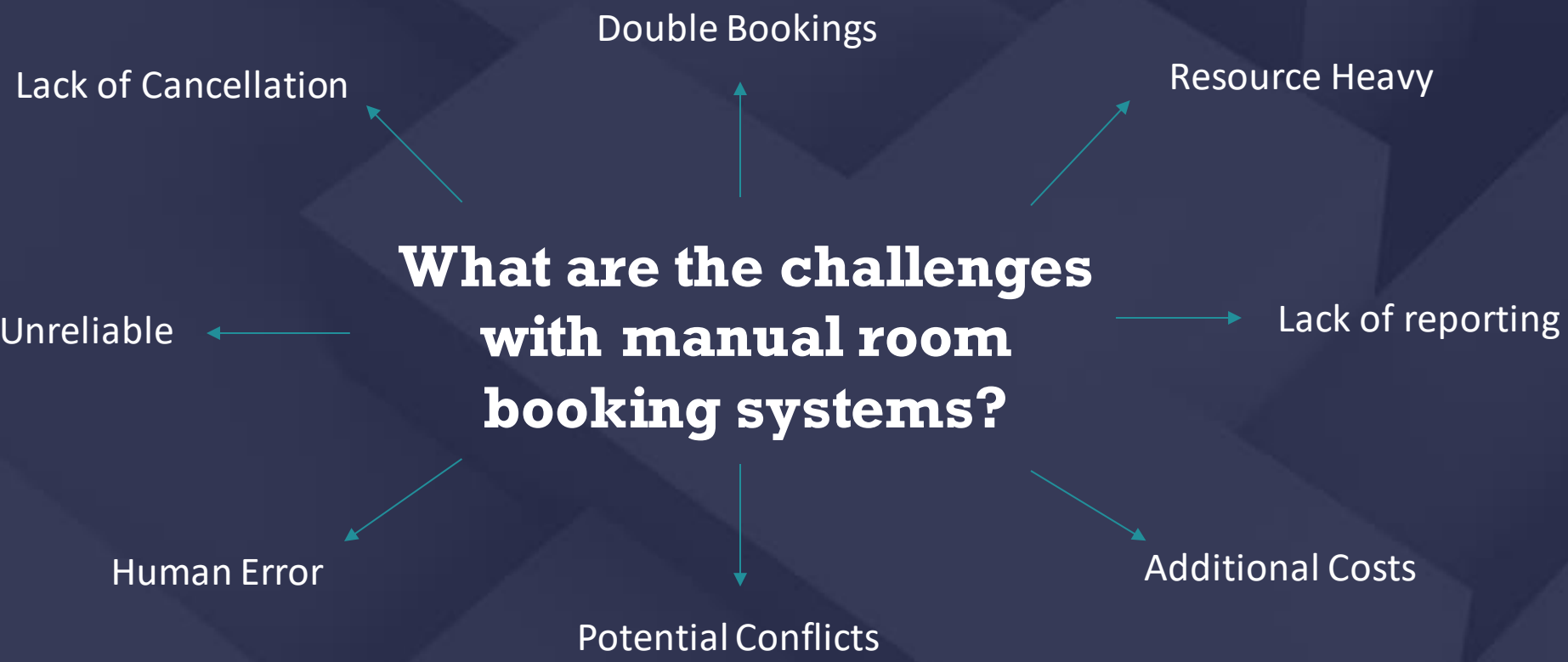
Data sources are fragmented

Laborious, manual processes

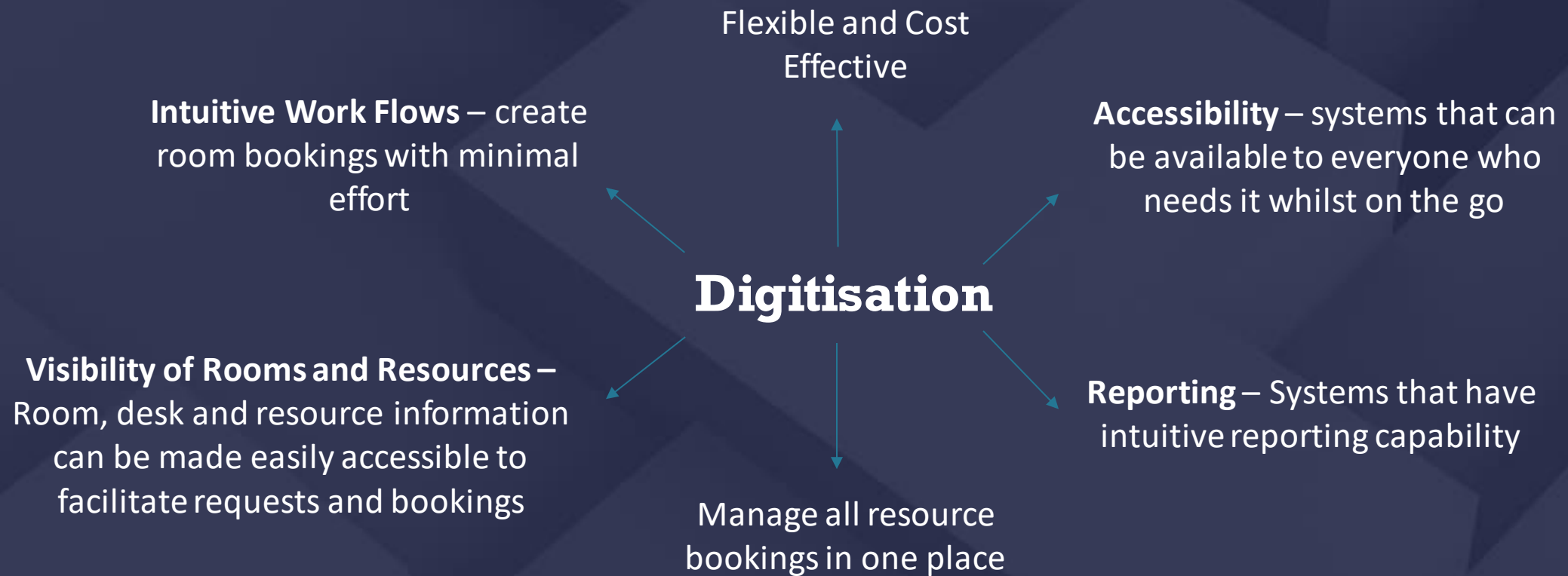
Resource, effort and time heavy

← And the solutions are... →





◀ And the solutions are... ▶



What are the challenges to manual Activity Scheduling and Management?

Lack of service continuity

Poor Training Schedules

Hard to maintain and update staff and patient schedules regularly

Schedule Conflicts

Human Error



And the solutions are...

Automated Scheduling -cutting-edge AI-based scheduling to help achieve fast, flexible and accurate timetabling solutions

Automated Digitisation

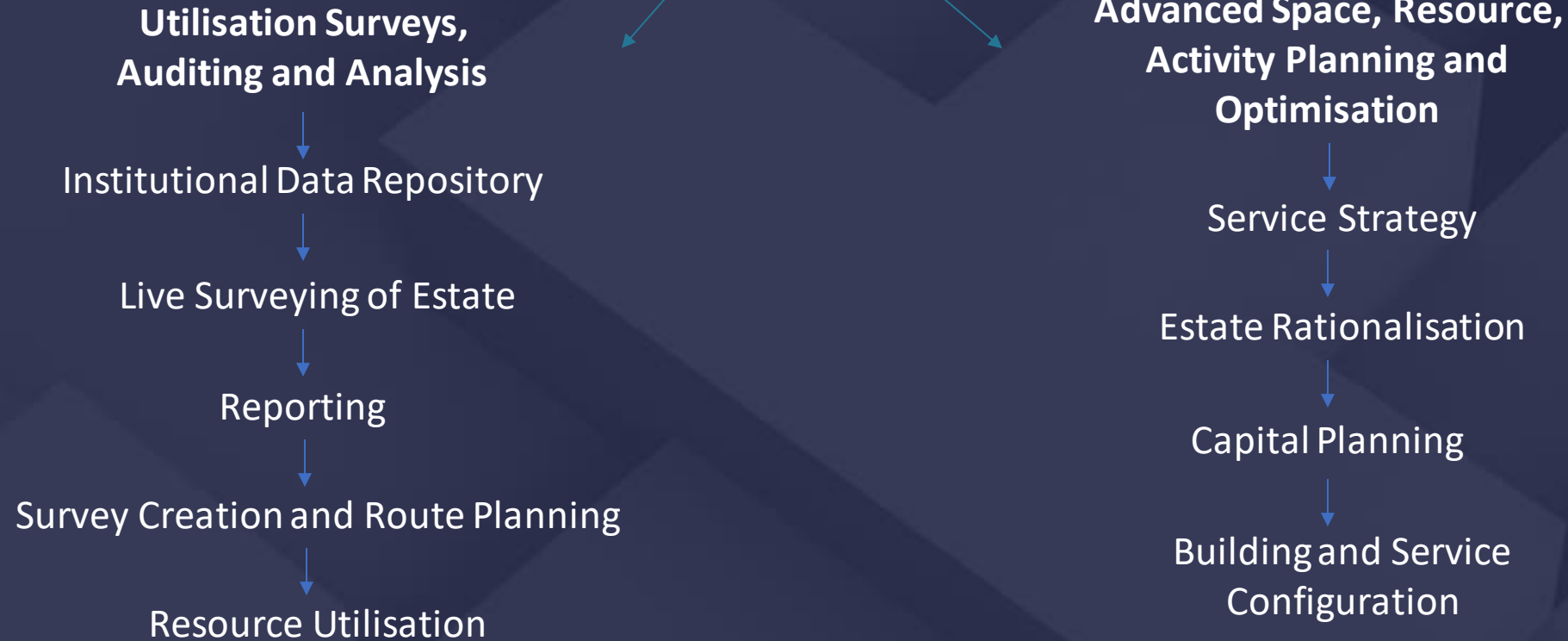
Collaborative Planning – Support with scheduling processes from rolling over existing timetables or starting from scratch

Decision Support – Continual scheduling solution assistance on current status, violation alerts and suggestions

Import, Export and Analyse Data – Have full access to add, update and retrieve data to support on boarding processes and real-time integration

Working In Sync – Cloud based platforms that provide convenient access and up-to-date information for stakeholders and students

Other manual processes that can be improved by digitisation and automation



Contact us for more Information:

Join our DEFT Partner Programme!

Benefits of joining are:

- Generate automatically calculated returns using cloud-based technology
- Help with set up and training from dedicated experienced staff
- Share experiences with other adopters

Required commitments:

- A commitment to progress with the Estates and Facilities Digitalisation agenda
- A staff contact who will liaise with QTS and EventMAP staff
- An Initial fee to cover licence, data set up, on-boarding and training



Alison Maffey



cnwl.qts.enquiries@nhs.net



0203 214 5950



Lunch & Networking



**Thank you for attending the
Facilities Management
Conference!**



**Register for the next NHS Estates
Conference in February 2024...**

